



General Info

Type	Heavy-Lift Box-Hold MPP Tweendecker
Class	Germanischer Lloyd
DWT	8,034 MT
Max Draft	7.72 M
LOA	119.80 M
Beam	20.00 M
Max Speed	About 16.0 Knots

Main Particulars

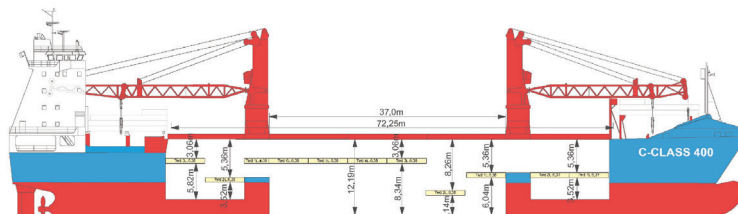
Cargo Holds	10,532 CBM Bale
Containers	516 TEU / 250 FEU
Cranes	2 x 200 MT = 400 MT COMBI
Strengths	15 MT/M ² on Tanktop 3.5 MT/M ² on Tweendeck 2.5 MT/M ² on Hatchcovers

Special Features

CO ² Fitted
IMO Fitted
Australia Fitted

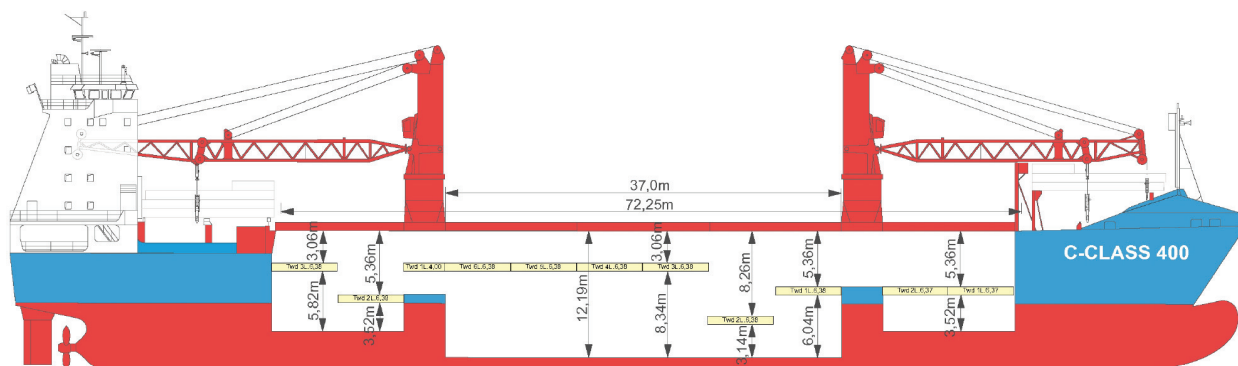
C-Class 400 Vessels

Industrial Charger	Built 2000
Industrial Challenger	Built 2000

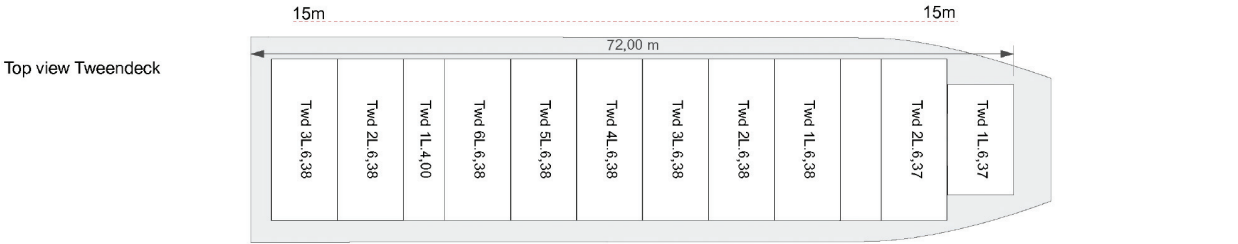
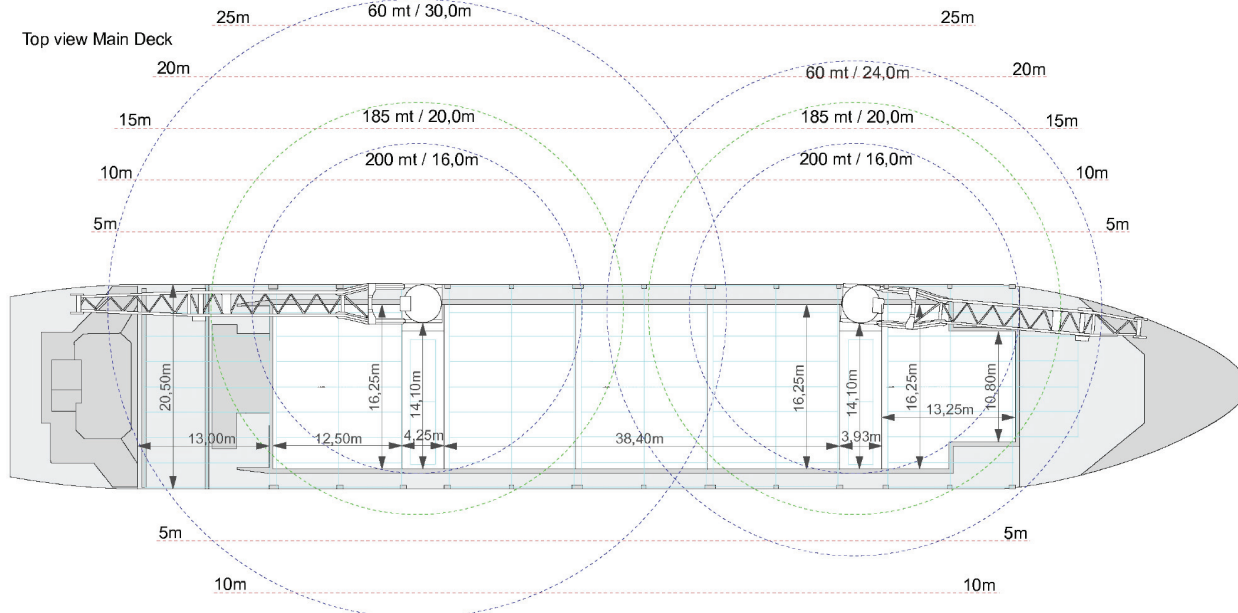


All above details are given in good faith but without guarantee. This description may not be used as basis for time charter parties or booking notes. If you like to receive further information please contact our sales team at www.intermarine.com





AP Frames 5 10 15 20 25 30 35 40 45 50 55 60 65 70 75 80 85 90 95 100 105 110 115 120 125 130 135 140 145 150 155



AP in meter 5 10 15 20 25 30 35 40 45 50 55 60 65 70 75 80 85 90 95 100 m from AP

