

---

**SHIP'S PARTICULARS**  
MV EMMA

---



**GENERAL INFORMATION**

<b>Vessel type</b>	Multipurpose cargo vessel
<b>Flag</b>	Antigua & Barbuda
<b>Port of registry</b>	St. John's
<b>IMO</b>	9474371
<b>Built</b>	2009, Poland
<b>Class</b>	DNV

**REGISTER TONNAGE**

<b>Classification</b>	GL + 100 A5 E3 Multi-purpose dry cargo ship BWM Equipped for carriage of containers DBC SOLAS-II-2, Reg. 19 Strengthened for heavy cargo, + MC E3 AUT
<b>Gross Net</b>	6,155 / 2,759
<b>Shipyard</b>	Gdanska Stoczina Remontowa, Poland
<b>Newbuilding No.</b>	B603/6
<b>P&amp;I Club</b>	North of England P&I

**DIMENSIONS**

<b>Length over all</b>	122.45 m
<b>Beam over all</b>	18.40 m
<b>Max. draft loaded summer</b>	7.15 m

**DEAD WEIGHT CAPACITIES**

<b>Dead weight a.t.</b>	7 700 t
-------------------------	---------

**PROPULSION / MANEUVERING**

<b>Main engine</b>	4320 kW
<b>Bow thruster</b>	450 kW
<b>Generator</b>	2 x 710 kW
<b>Emergency generator</b>	185 kW

**SPEED**

<b>Normal</b>	abt. 12.0 kn
<b>Economical</b>	abt. 10.0 kn

**CAPABILITIES**

<b>Cargo Capacity</b>	9 149 m <sup>3</sup>
<b>Container capacity</b>	Hold: 164 TEU
<b>Deck Container</b>	Deck: 368 TEU (32 reefer plugs) Total: 532 TEU
<b>Stack weight TEU/FEU Deck</b>	Tanktop: 61.5 / 61.5 mt Hatch covers: 40 / 50 mt 66 x 13.5 m + 12.6 x 10.2 m
<b>Tweendeck</b>	65.1 x 13.5 m + 12.6 x 10.2m

**DECK LOADS**

<b>Tanktop</b>	Hold No. 1: 10 mt/m <sup>2</sup> Hold No. 2: 18 mt/m <sup>2</sup>
<b>Tweendeck Hatches</b>	2.5 mt/m <sup>2</sup> No. 1: 2.3 mt/m <sup>2</sup> No. 2: 2.8 mt/m <sup>2</sup>

**HOLDS / HATCHES**

<b>No. of hold/hatches</b>	2/2
<b>Hatch cover type</b>	No. 1: TTS system lift on/lift off 2 covers sequential operation No. 2: TTS hydr. multifolding, 4 covers stowed to aft/4 to forward
<b>Hold 1</b>	12.6 x 10.2 m
<b>Hold 2</b>	65.1 x 13.5 m
<b>Grain/Bale capacity</b>	Hold No. 1: abt. 850 m <sup>3</sup> Hold No. 2: abt. 9 000 m <sup>3</sup> Total: abt. 9 850 m <sup>3</sup>

**GEAR**

<b>Type of Gear</b>	2 x 120 mt SWL cranes 240 mt combinable
<b>Load/Outreach</b>	120 mt / 4.0 m – 16.0 m 95 mt / 4.0 m – 19.0 m 75 mt / 4.0 m – 24.0 m 55 and 38 mt / 3.0 m – 33.0 m

**MISCELLANEOUS**

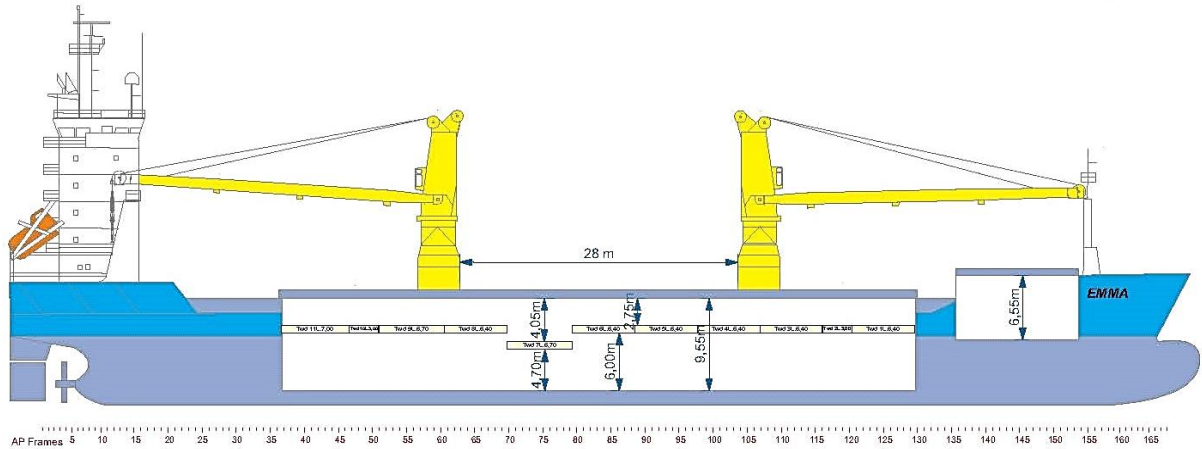
<b>CO<sup>2</sup> Fitted</b>	<b>IMO Fitted</b>
<b>Grain Fitted</b>	<b>TWD Pontoons as Bulkhead</b>
<b>DG Fitted</b>	<b>A60 bulkhead</b>

All particulars believed to be correct, but not guaranteed.

# SHIP'S PARTICULARS

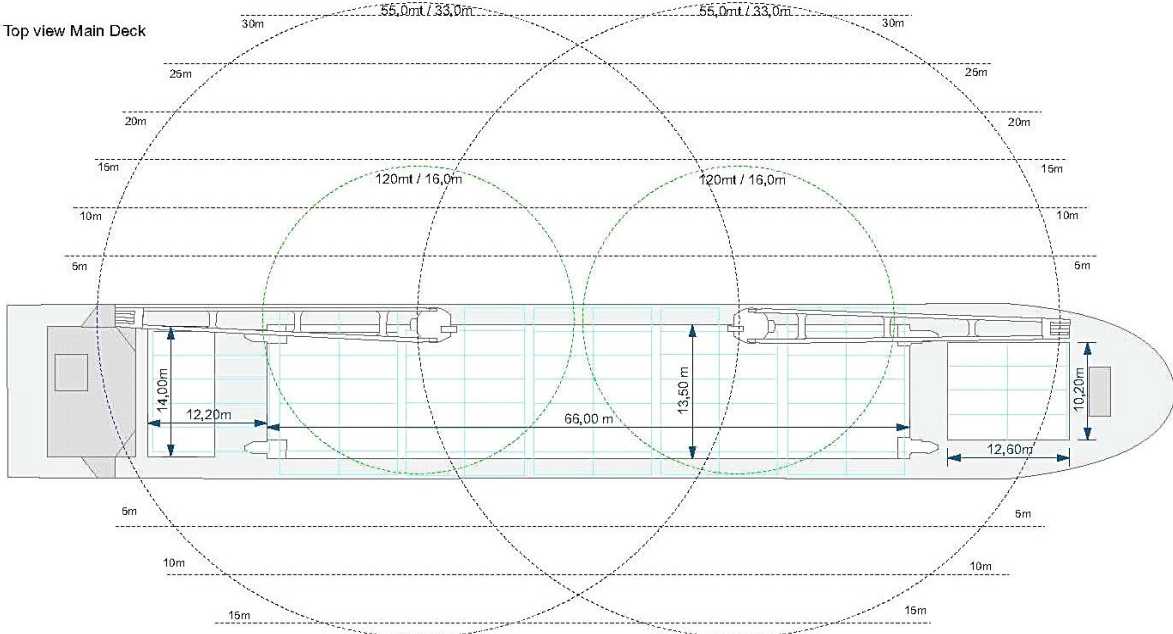
## MV EMMA

### GENERAL ARRANGEMENT PLAN

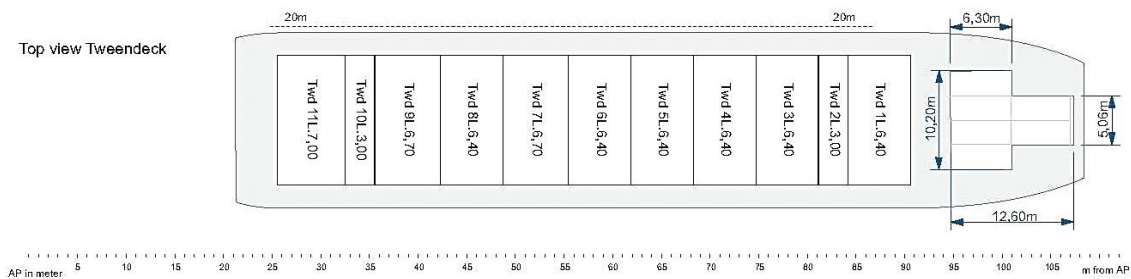


AP Frames 5 10 15 20 25 30 35 40 45 50 55 60 65 70 75 80 85 90 95 100 105 110 115 120 125 130 135 140 145 150 155 160 165

Top view Main Deck

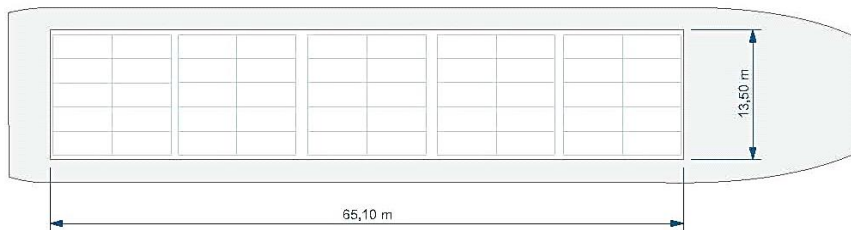


Top view Tweendeck



AP in meter 5 10 15 20 25 30 35 40 45 50 55 60 65 70 75 80 85 90 95 100 105 m from AP

Top view Tank Top



All particulars believed to be correct, but not guaranteed.