



SHIP PARTICULARS

8K-300

| Name | Built | IMO-No. | Flag | Name | Built | IMO-No. | Flag |
|---------------------|-------|---------|----------|-----------------------|-------|---------|----------|
| Industrial Color | 2019 | 9810355 | Portugal | Industrial Courage | 2018 | 9810329 | Portugal |
| Industrial Constant | 2018 | 9810343 | Portugal | Industrial Confidence | 2018 | 9810331 | Portugal |

GENERAL INFORMATION

| | |
|--------------|------------------|
| Type | Box-Hold MPP TWD |
| Class | Lloyd's Register |

TONNAGE

| | |
|------------|----------|
| DWT | 8,500 mt |
| GT | 7,498 mt |
| NT | 2,250 mt |

MAIN DATA

| | |
|---------------------|------------|
| LOA | 99.99 m |
| Beam | 20.50 m |
| Summer Draft | 8.40 m |
| Max Speed | 13.5 knots |

HOLDS/HATCHES

| | |
|-------------------|-------------------------|
| Number | 1 Hold / 1 Hatch |
| Hold No.1 | 60.90 x 15.30 x 12.10 m |
| Hatch No.1 | 60.90 x 15.30 m |

CARGO CAPACITY

| | | |
|-----------------------|---------------------------|------|
| with Tweendeck | 10,228 cbm / 361,198 cbft | Bale |
|-----------------------|---------------------------|------|

FLOOR SPACE

| | |
|-------------------|-------------------------|
| Under Deck | 1,665.86 m ² |
| On Deck | 927.59 m ² |
| Total | 2,593.45 m ² |

MAX. PERMISSABLE LOAD

| | |
|--------------------|-----------------------|
| Tanktop | 12 mt/m ² |
| Tweendeck | 3.5 mt/m ² |
| Hatchcovers | 3.5 mt/m ² |

CONTAINERS CAPACITY

| | |
|---------------------|---------|
| Total | 425 TEU |
| Reefer Plugs | 50 |

CARGO HANDLING GEAR

| | |
|-------------------------------|-----------------------|
| Cranes | 2 x 150 mt (portside) |
| Combined Lift Capacity | 300 mt |

SPECIAL EQUIPMENT/FEATURE

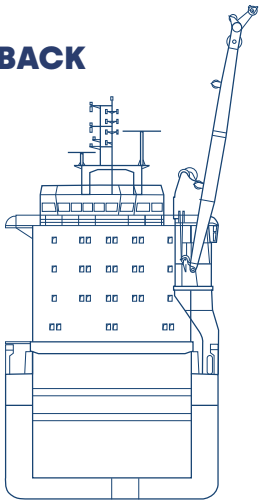
| | |
|---------------------|--------|
| IMO fitted | Yes |
| Lakes Fitted | Yes |
| CO2 Fitted | |
| A60 Bulkhead | Yes |
| Grain Fitted | |
| Bowthruster | 500 kW |

All details including speed are given in good faith and can vary on the individual vessels. They are to be considered „about“, are given without guarantee and must not be used as basis for charterparties or contracts without Intermarine's explicit written authority. For further information, please contact info@intermarine.com // **Last Revised: April 2024**

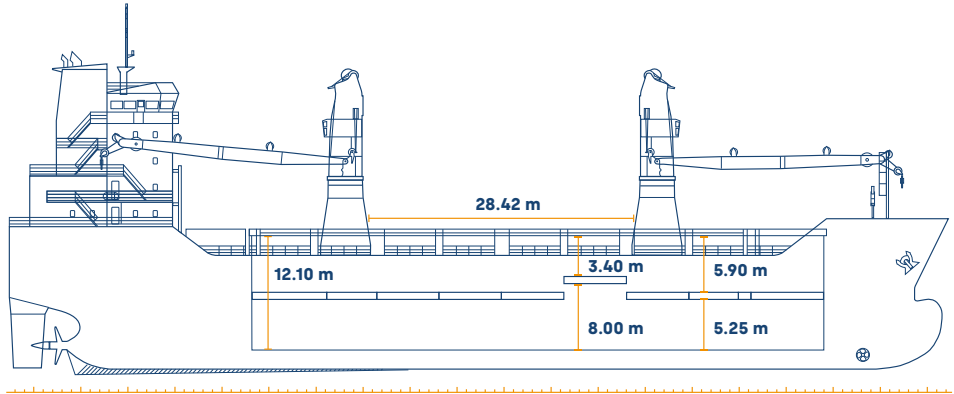
8K-300

**INDUSTRIAL COLOR
INDUSTRIAL CONSTANT
INDUSTRIAL COURAGE
INDUSTRIAL CONFIDENCE**

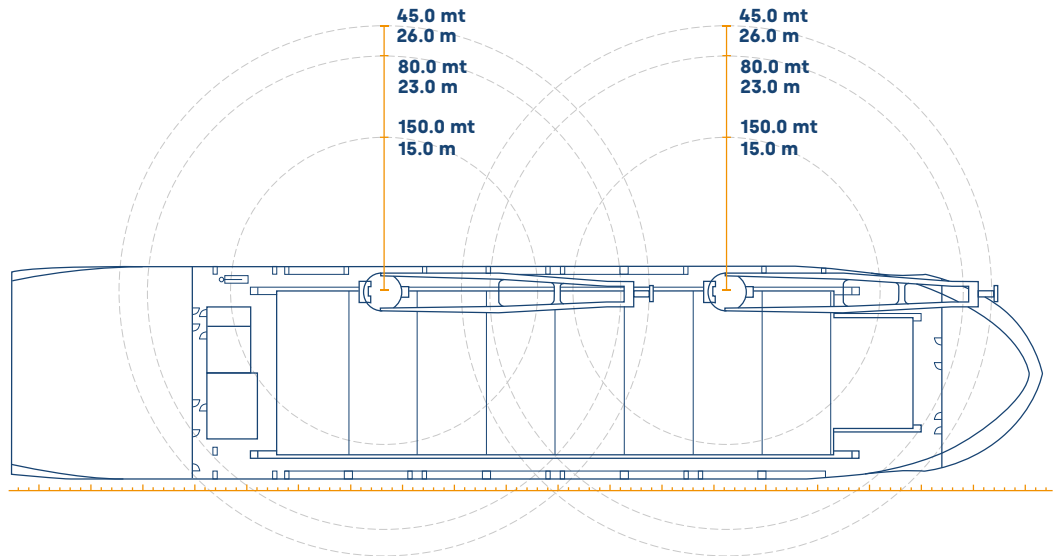
BACK



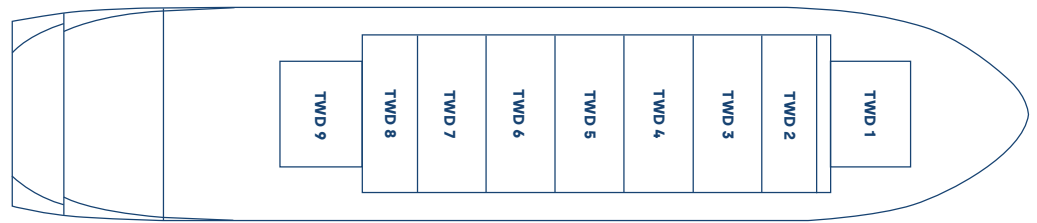
SIDE



MAINDECK



TWEENDECK



TANKTOP



All details including speed are given in good faith and can vary on the individual vessels. They are to be considered „about“, are given without guarantee and must not be used as basis for charterparties or contracts without Intermarine's explicit written authority. For further information, please contact info@intermarine.com // **Last Revised: April 2024**